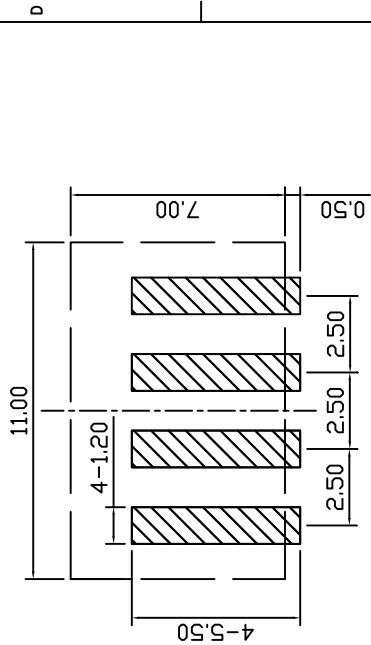
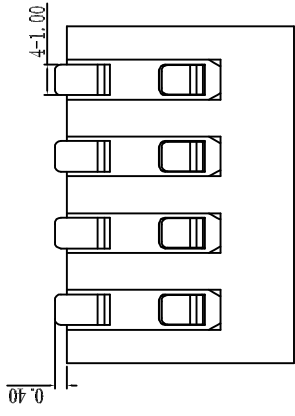
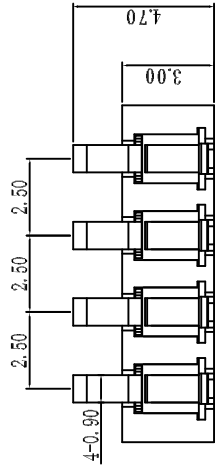
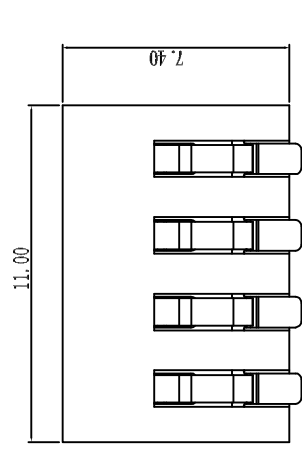
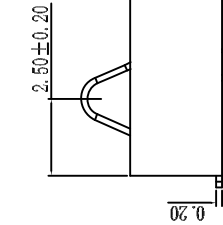
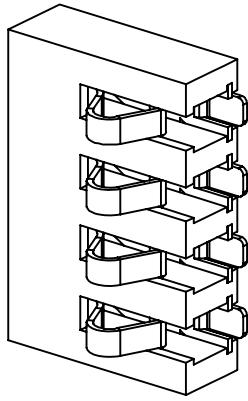


CUSTOMER DRAWING



RECOMMENDED P.C.B LAYOUT
TOLERANCE:±0.05



NOTES:

1. MATERIAL: COPPER ALLOY.
INSULATOR: HIGH TEMPERATURE THERMOPLASTIC UL94V-0, BLACK.
2. FINISH: 15 MICROINCH (0.381 MICRON) GOLD PLATE AT MATING AREA, 50-100 MICROINCH (1.27-2.54 MICRON) NICKEL UNDERPLATED ALL OVER.
3. ELECTRICAL SPECIFICATIONS:
VOLTAGE RATING: 250 VAC MIN
CURRENT RATING: 2.0 A MIN
DIELECTRIC STRENGTH: 1000 VAC FOR 1 MINUTE MIN
INSULATION RESISTANCE: 1000 MEG OHM MIN
CONTACT RESISTANCE: 30 MILLIOHM MAX
OPERATION TEMPERATURE: -55° TO +125°C
PRODUCT WITHSTANDING REFLOW SOLDERING 260° FOR 10S
4. MECHANICAL SPECIFICATIONS:
DURABILITY: 5,000 CYCLES
NORMAL FORCE AT MATED POSITION: 80g MIN.
5. PARTS TO BE FULFILLED ROHS REQUIREMENTS.

UNLESS OTHERWISE SPECIFIED		APPROVAL		DATE	
TOLERANCES		DRAWN			
U.S.		CHECKED			
+/-	0.25				
X, X, X	0.20				
FRACTIONS +/-	0.5°				
ANGLES +/-					
FOR MATERIALS AND FINISHES REMOVE SHARP EDGES					
DIMENSIONS					
U.S.—		INCHES—		ANGLE OF PROJECTION	
(METRIC)		(MM)			
Wellco T&C Co., Ltd.					
TITLE 4 PINS BATTERY CONNECTOR					
SIZE DRAWING NO. A4EBC020425030020				REV. D	
SCALE NONE				SHEET 1 OF 1	