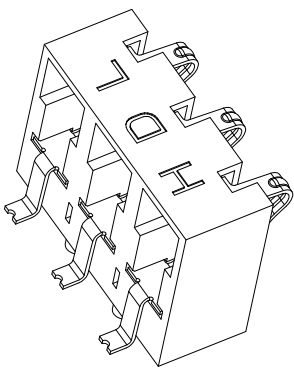


RoHS Compatible

| | | | | | |
|------|------|-------------|------|------|---|
| MAK. | QUA. | Description | REV. | DRW. | 黄 |
| △ | | | | | |
| △ | | | | | |

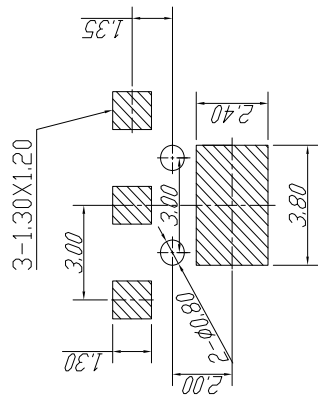
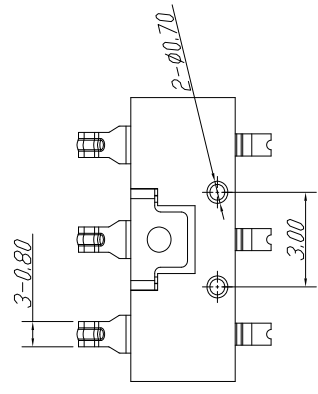
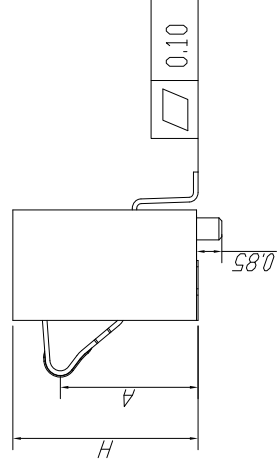
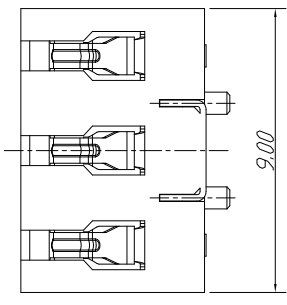
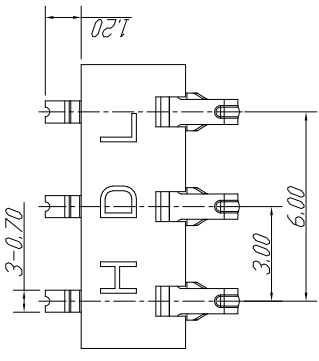


3D VIEW

| 序 | H | A | 料号 |
|---|------|------|--------------|
| 1 | 4.60 | 3.01 | BAT00004630X |
| 2 | 5.00 | 3.41 | BAT00005030X |
| 3 | 5.40 | 3.81 | BAT00005430X |
| 4 | 6.00 | 4.51 | BAT00006030X |
| 5 | 6.20 | 4.72 | BAT00006230X |
| 6 | 6.40 | 4.81 | BAT00006430X |
| 7 | 6.80 | 5.21 | BAT00006830X |

备注:

1. 材质:
 - 1.1 胶芯: LCP UL94V-0
 - 1.2 端子: 太铜, 镍底50um, 全金1um
2. 主要特征:
 - 2.1 额定电流: 0.5A
 - 2.2 接触阻抗: 50mΩ max
 - 2.3 绝缘阻抗: 100MΩ MIN 100V DC
 - 2.4 耐压测试: 100V AC
 - 2.5 沾锡性: 温度235±5℃, 时间5±0.5s
 - 2.6 使用寿命: 3000次
 - 2.7 工作环境: 温度: -30℃--+80℃; 湿度: 80% MAX



P.C.B LAYOUT__TOP VIEW



Wellco T&C Co., Ltd.

| | | |
|---------------|-------|------|
| Gen.Tolerance | Scale | Not |
| .X ± 0.20 | Unit | mm |
| .XX ± 0.08 | Size | ⊕ |
| .XXX ± 0.05 | | ∠±1° |

| | | |
|---|----------|--------------------------|
| This spec drawing is under the property of Wellco T&C Co., Ltd. | Rev. A | DRW by Amy July 23 2008 |
| | Page 1-1 | CHK by Long July 24 2008 |
| | | APP by Chin July 24 2008 |

P/N # BAT0000xx30

Battery connector