

SPECIFICATION FOR APPROVAL

1*1 Tab-down with transformer ,0/W LED and
EMI,10/100BT2 After 3.05

PRODUCT NAME:

PRODUCT NO :

TS-10017-7

CUSTOMER NO :

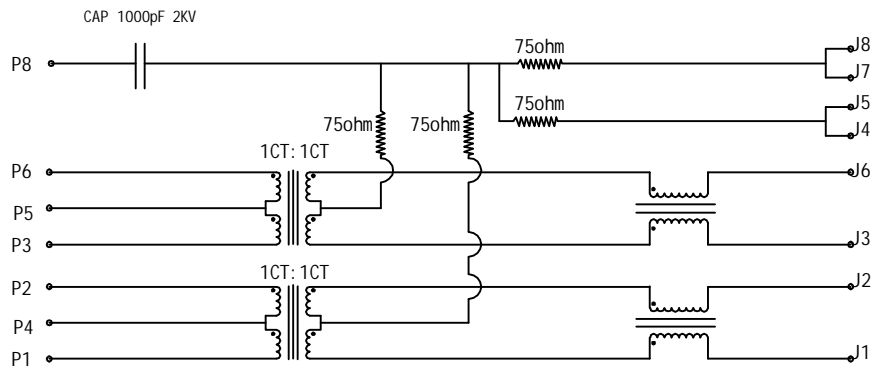
REV : 01

DATE :

Wellco		
Issued By	Checked By	Approved By

Customer		
Customer Approval: <input type="checkbox"/> Approved <input type="checkbox"/> ConecSSIONARY <input type="checkbox"/> Rejected		
Issued By	Checked By	Approved By

Wellco T&C Co., Ltd.



ALL THE RAW MATERIALS MEET RoHS STANDARD

ELECTRICAL SPECIFICATIONS:

- | | |
|---|---|
| 1.0 TURN RATIO: (P1~P2): (J1~J2) | : 1:1 ±3% |
| (P3~P6): (J3~J6) | : 1:1 ±3% |
| 2.0 INDUCTANCE: (P1~P2) | : 350uH MIN @ 0.1V, 100KHZ, 8mA DC BIAS |
| (P3~P6) | : 350uH MIN @ 0.1V, 100KHZ, 8mA DC BIAS |
| 3.0 LEAKAGE INDUCTANCE: P1~P2(WITH J1 AND J2 SHORT) | : 0.35uH MAX @1 MHZ |
| P3~P6(WITH J3 AND J6 SHORT) | : 0.35uH MAX @1 MHZ |
| 4.0 INTERWINDING CAPACITANCE: (P1~P2): (J1~J2) | : 35pF MAX @ 1MHZ |
| (P3~P6): (J3~J6) | : 35pF MAX @ 1MHZ |
| 5.0 DC RESISTANCE: (J1~J2): (J1~J2) | : 1.2 OHMS MAX |
| 6.0 RETURN LOSS: 1MHZ TO 30MHZ | : -18dB MIN |
| 30MHZ TO 80MHZ | : -12dB MIN |
| 7.0 DIELECTRIC WITHSTAND: (P1~P2): (J1~J2) | : 1500VAC |
| (P3~P6): (J3~J6) | : 1500VAC |
| 8.0 INSERTION LOSS: RS=RL=100OHM | |
| 100KHZ TO 80MHZ | : 1.1dB MAX |
| 9.0 CROSS TALK: 1MHZ TO 100MHZ | : 35dB TYP |
| 10.0 COMMON TO COMMON MODE ATTENUATION: 30MHZ TO 100MHZ | : 30dB TYP |

SIZE A	DRAWING NO. TS-10017-7	REV 01
SCALE N/A		SHEET 2 OF 3

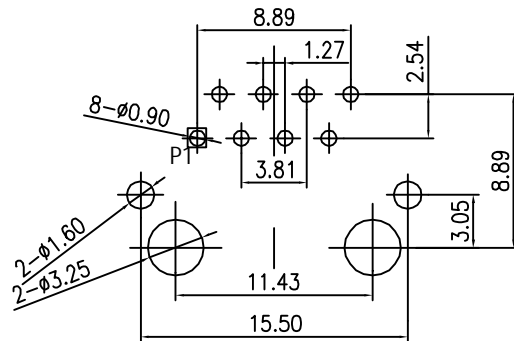
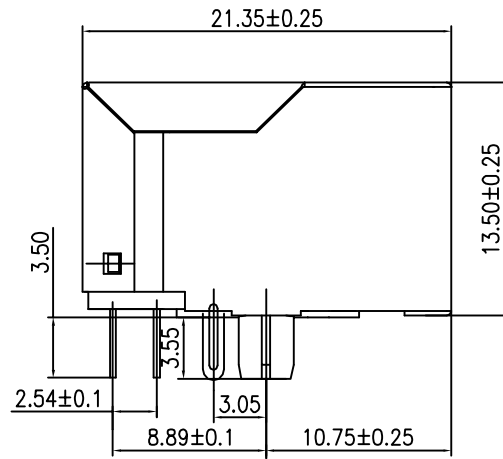
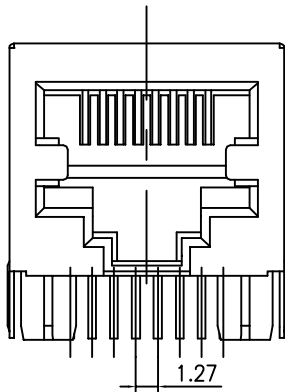
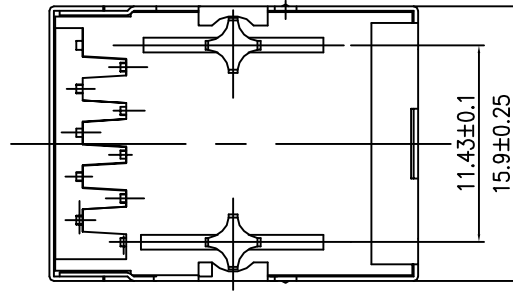
MECHANIC SPECIFICATIONS:

NOTES:

1. CONNECTOR MATERIAL:
 HOUSING: THERMOPLASTIC UL94 V-0
 CONTACT/SHIELD: COOPER ALLOY
 SHIELD PLATING: NICKEL OR TIN
 CONTACT PLATING: SELECTIVE GOLD,
 50 MICRO-INCHS MIN
 30 MICRO-INCHS MIN
 15 MICRO-INCHS MIN
 6 MICRO-INCHS MIN
 3 MICRO-INCHS MIN
 IN CONTACT AREA



2. PIN NOT ELECTRICALLY CONNECTED MAYBE OMITTED SEE ELECTRICAL DRAWING FOR OMITTED PINS
3. TOLERANCES COMPLY WITH F. C. C DIMENSION REQUIREMENTS
4. WAVE SOLDER COMPATIBLE-PREHEAT 125°C DEGREE/90SECS
5. ALL TOLERANCES NOT OTHERWISE SPECIFIED TO BE ±0.25mm.



Ordering informer:
TS-10017-7XX

P. C. B RECOMMENDED HOLE LAYOUT SEEN FROM COMPONENT SIDE.

ALL CENTERLINE DIMENSIONS ARE BASIC

See Sheet

Material Plastic:
 N: without Haloid.
 H: with Haloid

Code	Housing Colour	Housing Material	Insertor Colour	Insertor Material
Z	Black	PBT	Black	PBT
Y	Black	PBT	Yellow	PBT
W	Yellow	PBT	Black	PBT
U	Yellow	PBT	Yellow	PBT
T	Black	PA66	Black	PBT
S	Black	PA66	Yellow	PBT
R	Yellow	PA66	Black	PBT
Q	Yellow	PA66	Yellow	PBT
P	Black	PA46	Black	PBT
O	Black	PA46	Yellow	PBT
N	Yellow	PA46	Black	PBT
M	Yellow	PA46	Yellow	PBT

SIZE A	DRAWING NO. TS-10017-7	REV 01
SCALE N/A	SHEET 3 OF 3	