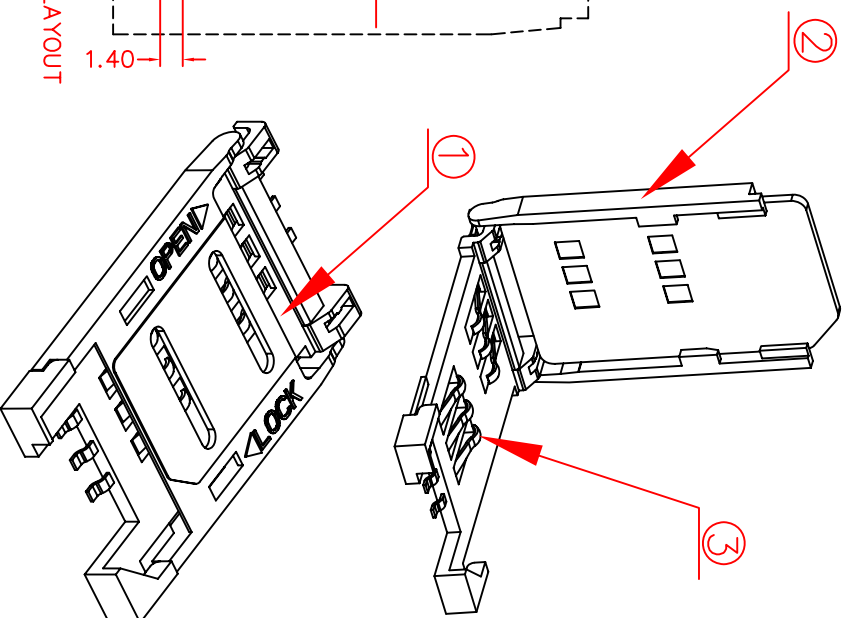
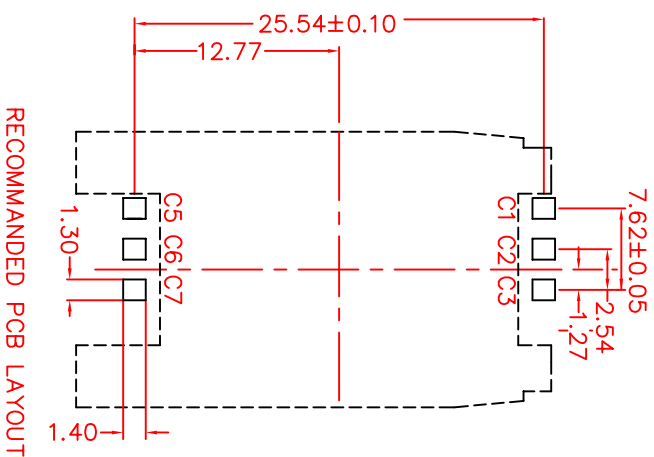
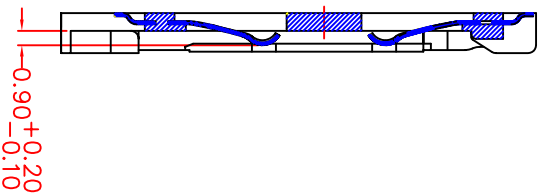
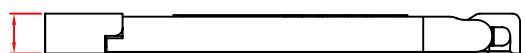
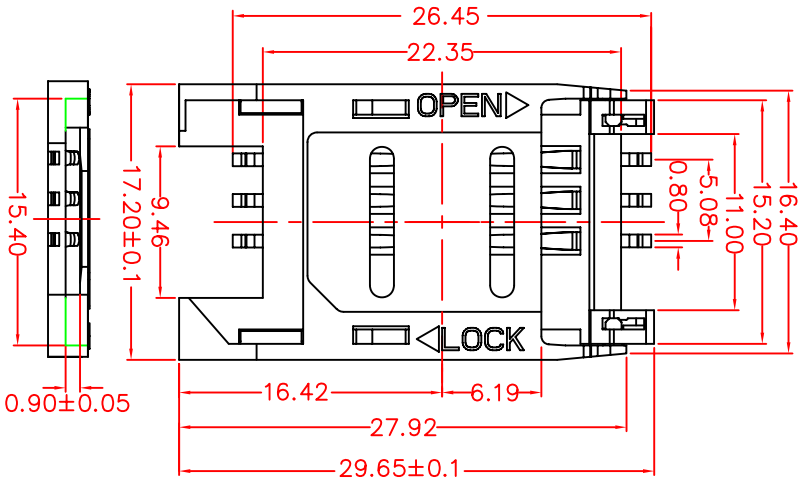


ITEM	PART NAME	Q'TY	MATERIAL
①	BASE	1PCS	Thermoplastic UL94-0
②	COVER	1PCS	Thermoplastic UL94-0
③	Data contact	6PIN	Phosphor bronze



TECHNICAL CHARACTERISTICS

1.General Characteristics

Dimensions: 29.65L x17.20W x2.60±0.10H mm
 Weight: Approx.1.0±0.2g
 Contact principle: Friction technology
 Operating position: shaft up/down/horizontal
 Mounting System: SMT(Post Optional)
 Durability: 5000 cycles min.

2.Mechanical characteristics:

Insulation material: Thermoplastic, UL 94V-0

3.Electrical Characteristics

Number of contacts (Optional): 6pins or 8pins
 contact resistance: 50mΩ typical, 100mΩ max
 insulation resistance: >1000MΩ/500V DC

4.Solderability

wave: Not applicable
 Vaporphase: 215°C, 30sec. Max
 IR reflow: 230°C, 15sec. Max
 Manual soldering : 360°C, 3sec. Max

5.Environmental Characteristics

Operating temperature: -40°C~+85°C
 Operating humidity : 10%~+95%RH
 Storage temperature: -40°C~+85°C
 Storage Humidity: 10%~95%RH
 thermal shock: -40°C~+85°C, 5cycles
 Damp Heat: 40°C, 90%RH, 10days.
 Salt-Mist: 35°C, 5%NaCl, 24HR

Wellco T&C Co., Ltd.

Smart Card Acceptor

Model No.: -C711(w/o post)

SIM Card Connector

REVISION:1.0

DATE: MAR.21. 2006