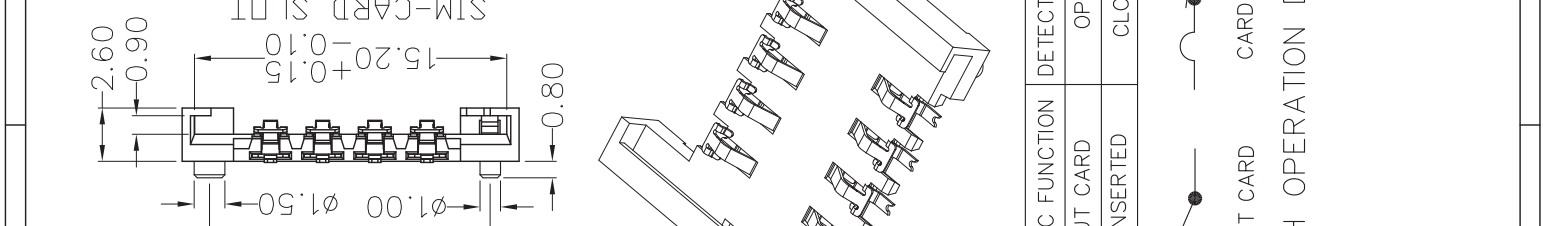
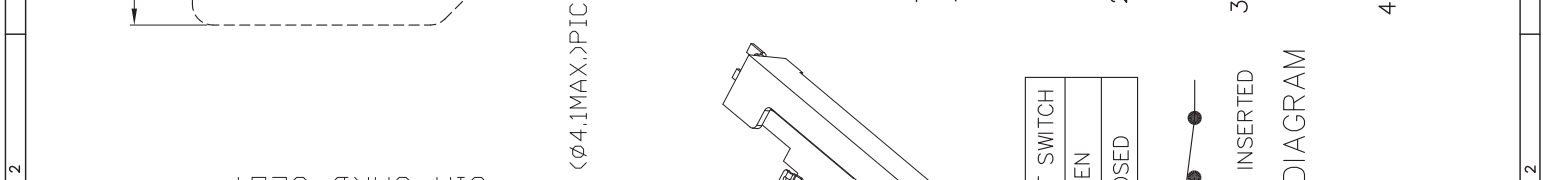
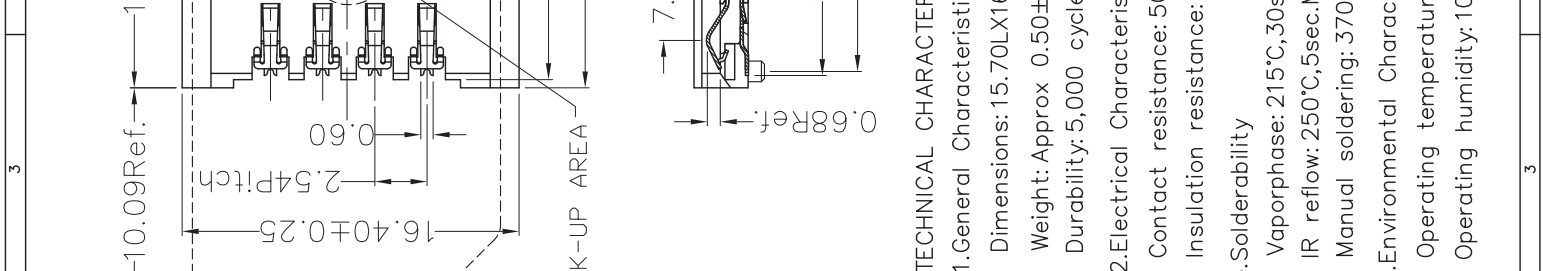
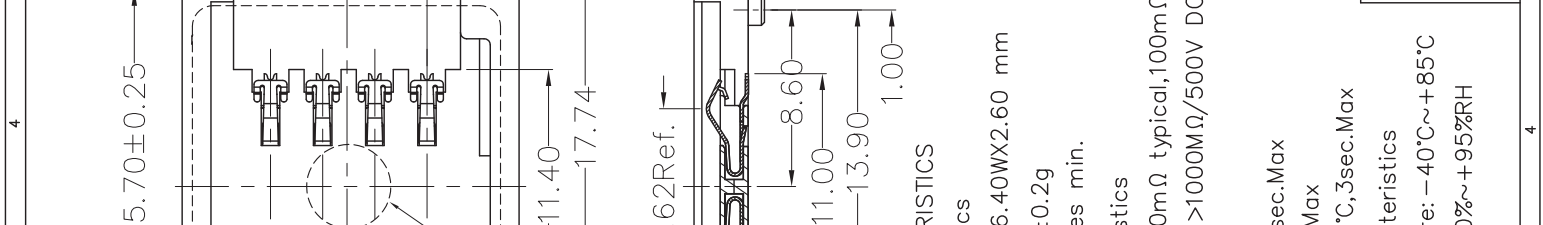
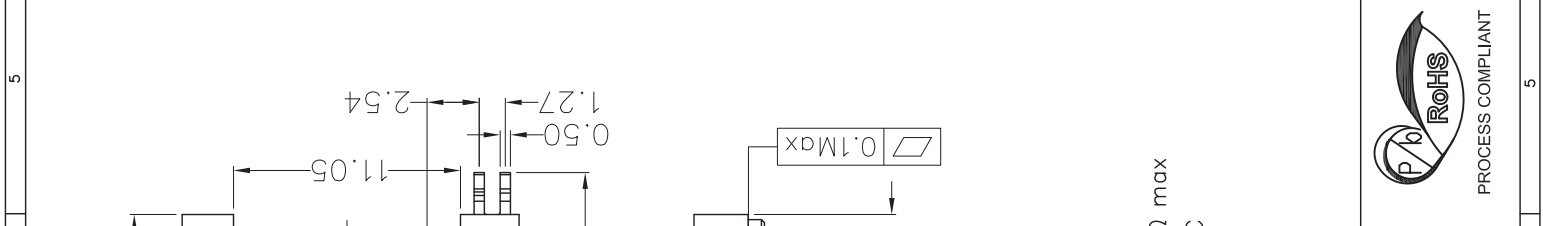
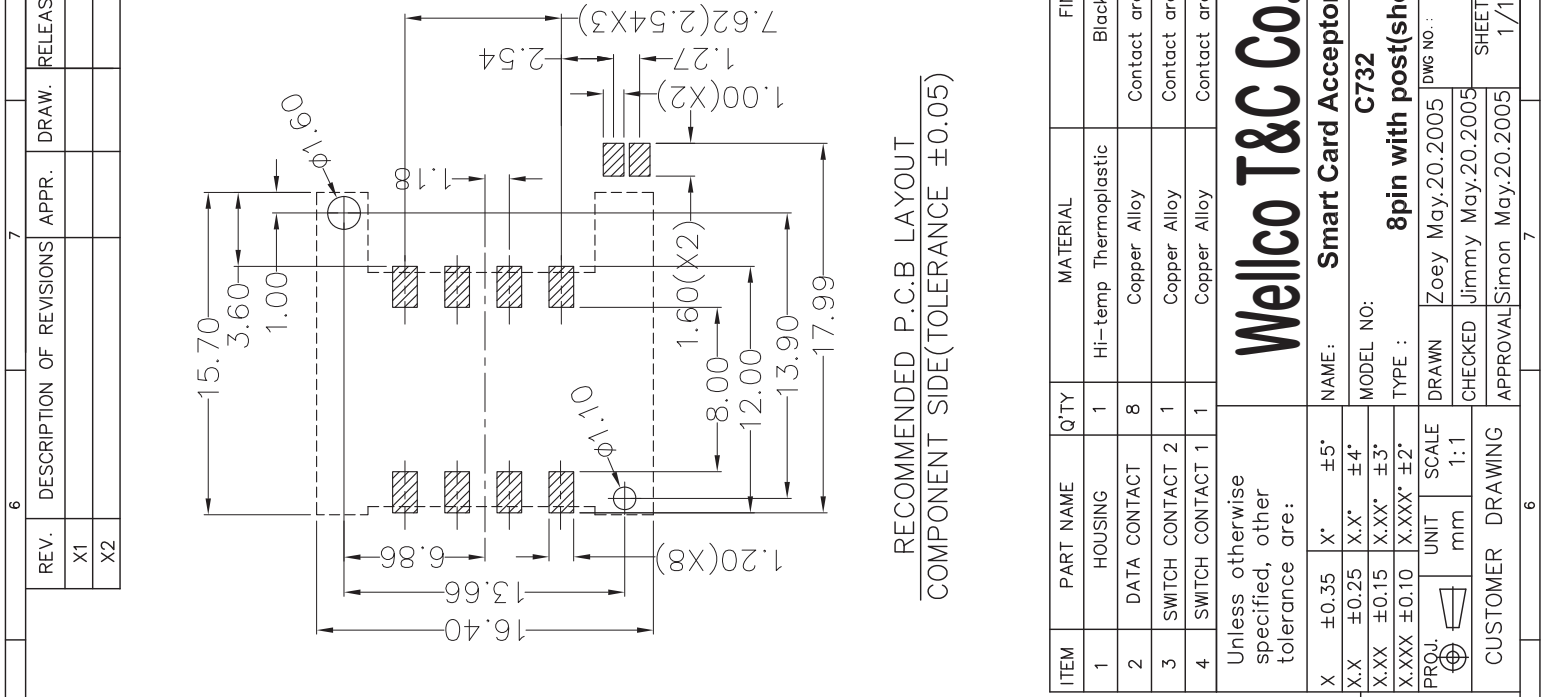


REV. X1	DESCRIPTION OF REVISIONS	APPR.	DRAW.	RELEASE	DATE
REV. X2					



ITEM	PART NAME	Q'TY	MATERIAL	FINISH
1	HOUSING	1	Hi-temp Thermoplastic	Black UL94V-0
2	DATA CONTACT	8	Copper Alloy	Contact area: Gold plated
3	SWITCH CONTACT 2	1	Copper Alloy	Contact area: Gold plated
4	SWITCH CONTACT 1	1	Copper Alloy	Contact area: Gold plated

Unless otherwise specified, other tolerance are:

X	±0.35	X'	±5'
X-X	±0.25	X-X'	±4'
X-XX	±0.15	X-XX'	±3'
X-XXX	±0.10	X-XXX'	±2'

PROJ. UNIT SCALE 1:1

CUSTOMER DRAWING	DRAWING
APPROVAL	Simon May.20.2005
CHECKED	Jimmy May.20.2005
DRAWN	Zoey May.20.2005

NAME: **Smart Card Acceptor**
 MODEL NO: **C732**
 TYPE: **8pin with post(shorter tail)**

DWG NO.: C732-001
 SHEET 1/1
 REVISION X1

RECOMMENDED P.C.B LAYOUT
COMPONENT SIDE(TOLERANCE ±0.05)

TECHNICAL CHARACTERISTICS

- General Characteristics
 Dimensions: 15.70LX16.40WX2.60 mm
 Weight: Approx 0.50±0.2g
 Durability: 5,000 cycles min.
- Electrical Characteristics
 Contact resistance: 50mΩ typical, 100mΩ max
 Insulation resistance: >1000MΩ/500V DC
- Solderability
 Vaporphase: 215°C, 30sec. Max
 IR reflow: 250°C, 5sec. Max
 Manual soldering: 370°C, 3sec. Max
- Environmental Characteristics
 Operating temperature: -40°C~+85°C
 Operating humidity: 10%~+95%RH

PROCESS COMPLIANT