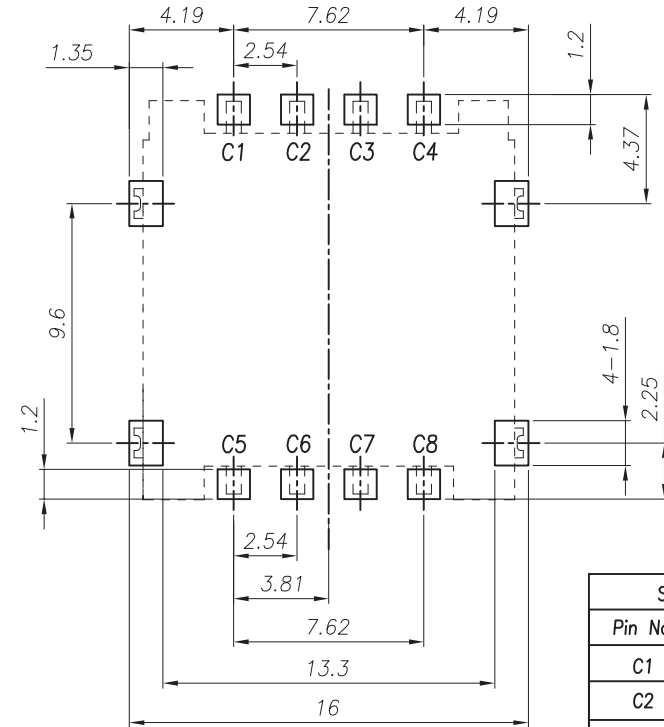
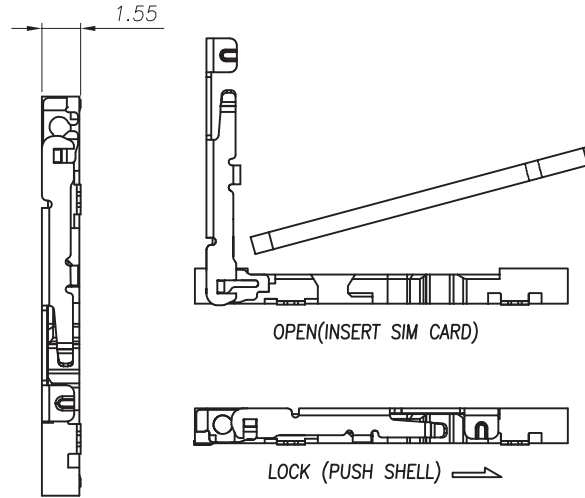
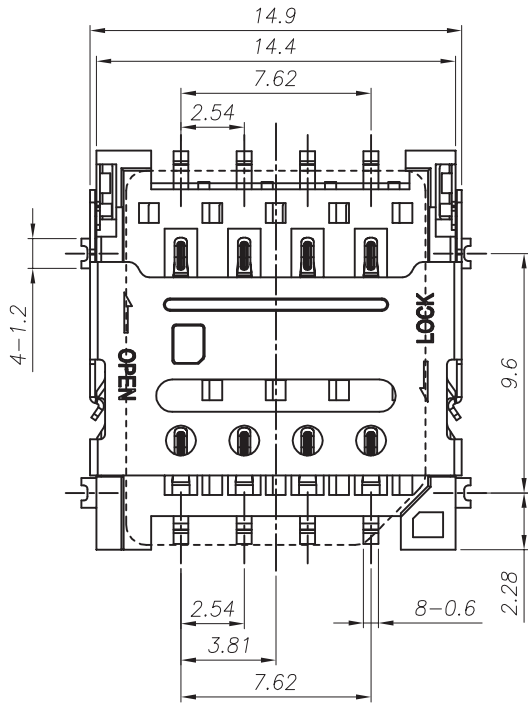


REV.	ECN NO OR DESCRIPTION	REVISED	DATE
▽	PROPOSE ONLY	ALLEN	2015.06.04

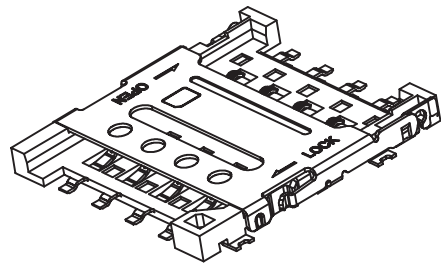
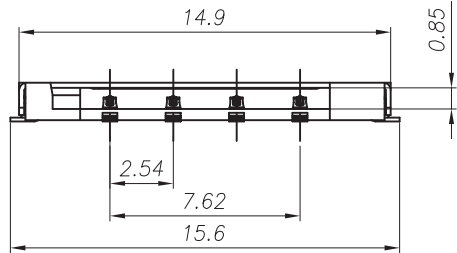


SIM CARD	
Pin No.	NAME
C1	VCC
C2	RST
C3	CLK
C4	RESERVED
C5	GND
C6	VPP
C7	I/O
C8	RESERVED

*Recommended PCB Layout*  
(General tolerance:±0.05)

**NOTES:**

- ELECTRICAL CHARACTERISTICS**
  - CONTACT RESISTANCE: 60 Milliohms Max
  - INSULATION RESISTANCE: 1,000 Megohms Min.
  - DIELECTRIC WITHSTANDING VOLTAGE: 500V AC FOR 1 MINUTE.
- MECHANICAL CHARACTERISTICS**
  - OPERATION TEMPERATURE RANGE: -25°C~+70°C
  - DURABILITY: 5000 CYCLES
- MATERIAL:**
  - HOUSING: THERMOPLASTIC,UL 94-V0
  - TERMINAL: PHOSPHOR BRONZE,T=0.15
  - SHELL: STAINLESS STEEL,T=0.15
- FINISHED:**
  - TERMINAL: Ni PLATED UNDER,Au PLATED ON CONTACT AREA,G/F PLATED ON SOLDER TAIL
  - SHELL: Ni PLATED UNDER,G/F PLATED ON SOLDER TAIL



PART No.:

**S 0 HG - 15 00 08 - 10 G**

SIM CON.    
 0=WITHOUT POST   
 HG=HINGE TYPE.   
 15:HEIGHT 1.5mm   
 G=gold flash   
 10=Product Order   
 Pin NO. 8=8Pin   
 00=NORMAL TYPE.(ON PCB)

③	TERMINAL	8	C5210-EH,T=0.12	Au 1u" PLATING
②	BASE INSULATOR	1	LCP+GF30%	BLACK
①	SHELL	1	SUS304-H,T=0.12	AU/Ni PLATING
NO.	PART NAME	Q'TY	DESCRIPTION	NOTE

UNLESS OTHERWISE SPECIFIED TOLERANCES

DECIMALS:	ANGLES:
X :±0.5	X :±2°
X.X :±0.20	X.X :±1°
X.XX :±0.10	

**Wellco T&C Co., Ltd.**

TITLE	8Pin 1.5H HINGE Micro SIM CARD CONN.			
DWN	ALLEN	PART NO. SOHG-150008-10G		
CHKD	KEVIN	SCALE:1:1	UNIT: mm	
APVD	ERIC.W	SIZE: A3	SHEET:1OF 1	REV: A1

CUSTOMER COPY