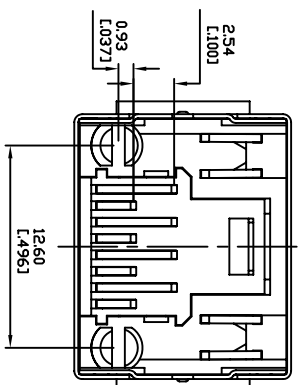
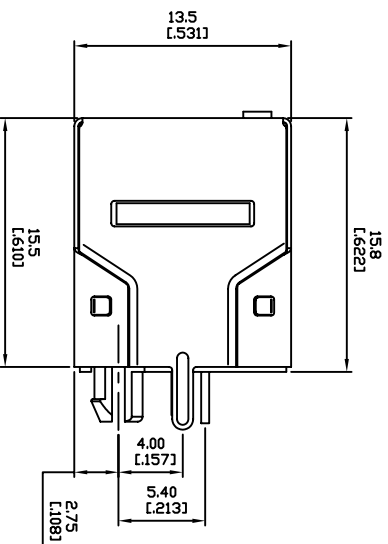
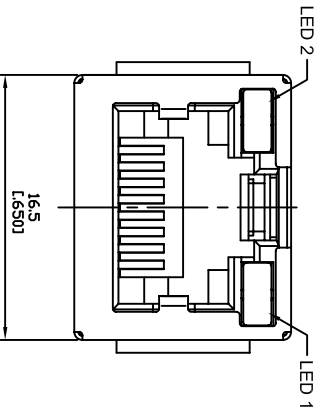


SUGGESTED PCB LAYOUT
TOP VIEW

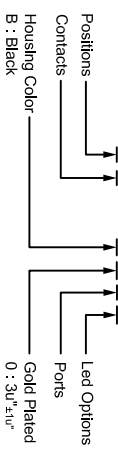


- Electrical Characteristics :
- Insulation Resistance : 500MΩ Min.
 - Contact Resistance : 50mΩ Max.
 - Withstand Voltage : 500 VAC 1 minute.
 - Current Rating : 1.5A

Material:

- Housing: Thermoplastic UL 94V-0
- Contact : Selective Gold Plating
- Terminal: 0.35mm Thickness Phosphor Bronze Plated With Gold And Tin In Solder Area.
- Shielded: Brass ,Nickel Plating
- CUL File No : E215573

PART NO : 8 1 8 8 P - B * 1 *



- Positions
- Contacts
- Housing Color
- Ports
- Gold Plated
- B : Black

LED Color Options Table

LED Color Options	LED 2 (Left)	LED 1 (Right)	LED DASH OPTION
NO LED	NO LED	NO LED	0
Yellow	Green	Green	1
NO LED	Green	NO LED	2
Yellow	Yellow	NO LED	3
Green	Yellow	Yellow	4
Yellow	Green	Yellow	5
Orange/Green	Orange/Green	Yellow	6
Yellow/Green	Yellow/Green	Orange/Green	7
Orange/Green	Yellow	Yellow/Green	8
NO LED	Green/Yellow	Yellow	9
Green	Orange	Green/Yellow	Z
Orange	Green	Orange	A
Green	Red	Green	B
Red	Green	Red	C
Green	Green	Green	D

Wellco T&C Co., Ltd.

ZONE	REV.	DESCRIPTION	DATE	APPD.	FILE NO : 81P (SERIES)
(A)					
(B)					
(C)					
(D)					
(E)					

TOLERANCE (公差) :

- 0.000 mm ± 0.075mm
- 0.00 mm ± 0.15mm
- 0.0 mm ± 0.25mm

TITLE	SHIELDED R145 WITH LED PCB JACK	UNIT	mm
圖名		單位	inch
PART NO.	8188P-B*1*	SCALE	1:1
料號		比例	
REV.	A.0	DATE	2007-08-13
版本			
CHECKED BY	Michael	DRAWN BY	Maisie
審核		製圖	