

SUGGESTED PCB LAYOUT  
TOP VIEW

- Electrical Characteristics :**
- Insulation Resistance : 500M $\Omega$  Min.
  - Contact Resistance : 50m $\Omega$  Max.
  - Withstand Voltage : 500 VAC 1 minute.
  - Current Rating : 1.5A

**Material:**

Housing: Thermoplastic UL 94V-0

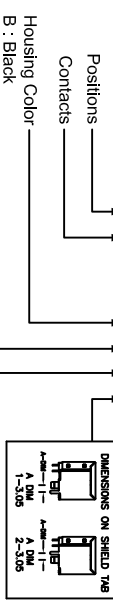
Contact : Selective Gold Plating

Terminal: 0.35mm Thickness Phosphor Bronze

Plated With Gold And Tin In Solder Area.

CUL File No : E215573

PART NO : 5 3 8 8 C - B\*1\*

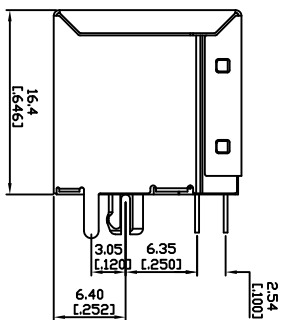
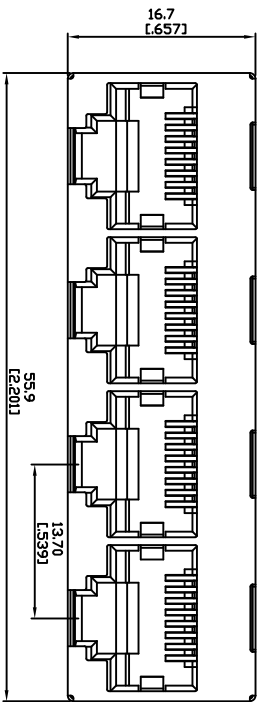
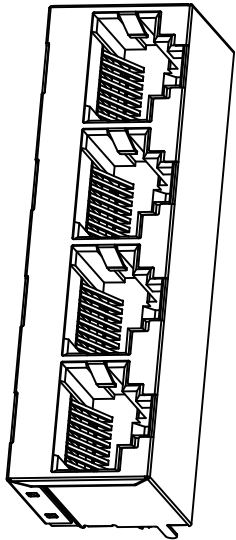


- Ports
- 0 : 3U"±1U"
  - 1 : 6U"±1U"
  - 2 : 15U"±.5%
  - 3 : 30U"±.5%
  - 4 : 50U"±.5%

# Wellco T&C Co., Ltd.

ZONE	REV.	DESCRIPTION	DATE	APPD.	FILE NO : 5388C (SERIES)
(A)					<b>TOLERANCE(公差) :</b> 0.000 mm $\pm$ 0.075 mm 0.00 mm $\pm$ 0.15 mm 0.0 mm $\pm$ 0.25 mm
(B)					
(C)					
(D)					
(E)					

TITLE		SHEILED RJ45 TOP ENTRY PCB JACK		UNIT
圖名		5388C-B*1*		單位
PART NO.		DATE		比例
料號		2007-10-18		1:1
REV.		DATE		
版本		2007-10-18		
CHECKED BY		DRAWN BY		
審核		Michael		David
		製圖		



- Electrical Characteristics :**
- Insulation Resistance : 500MΩ Min.
  - Contact Resistance : 50mΩ Max.
  - Withstand Voltage : 500 VAC 1 minute.
  - Current Rating : 1.5A

**Material:**

Housing: Thermoplastic UL 94V-0

Contact : Selective Gold Plating

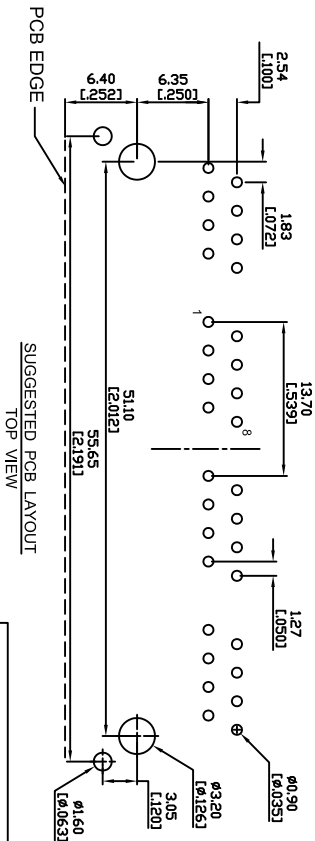
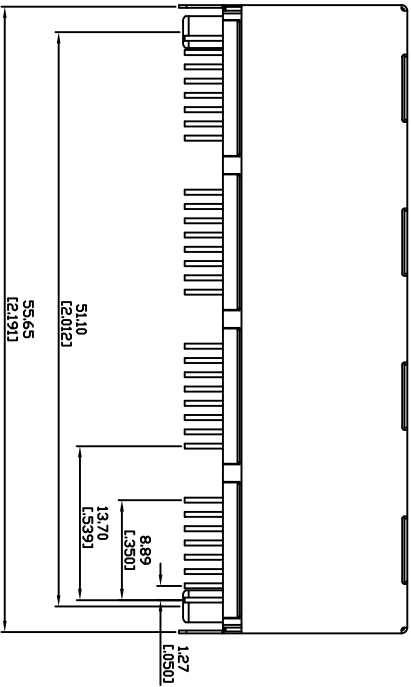
Terminal: 0.35mm Thickness Phosphor Bronze

Plated With Gold And Tin In Solder Area.

CUL File No : E215573

PART NO : 5 3 8 8 C - B \* 4 1

- Positions
- Contacts
- Ports
- Gold Plated
- 0 : 30" ±10"
- 1 : 60" ±10"
- 2 : 150" ± 5%
- 3 : 300" ± 5%
- 4 : 500" ± 5%



**Wellco T&C Co., Ltd.**

ZONE	REV.	DESCRIPTION	DATE	APPD.	FILE NO : 5388C (SERIES)	TOLERANCE (公差) :
(A)						0.000 mm ± 0.075 mm
(B)						0.00 mm ± 0.15 mm
(C)						0.0 mm ± 0.25 mm
(D)						
(E)						

TITLE	圖名	SHEILED RJ45	UNIT
PART NO.	料號	TOP ENTRY PCB JACK	mm
REV.	版本	5388C-B*41	inch
CHECKED BY	DATE	2007-10-18	SCALE
審核	日期		比例
	Michael		1 : 1
	DRAWN BY	製圖	
	David		