

REV.	ECN NO OR DESCRIPTION	REVISED	DATE
▽	PROPOSE ONLY	ALLEN	2015.06.04

A

B

C

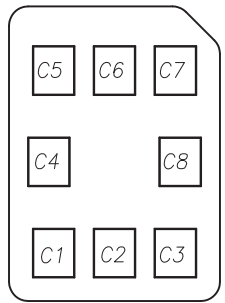
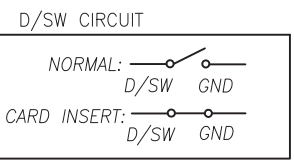
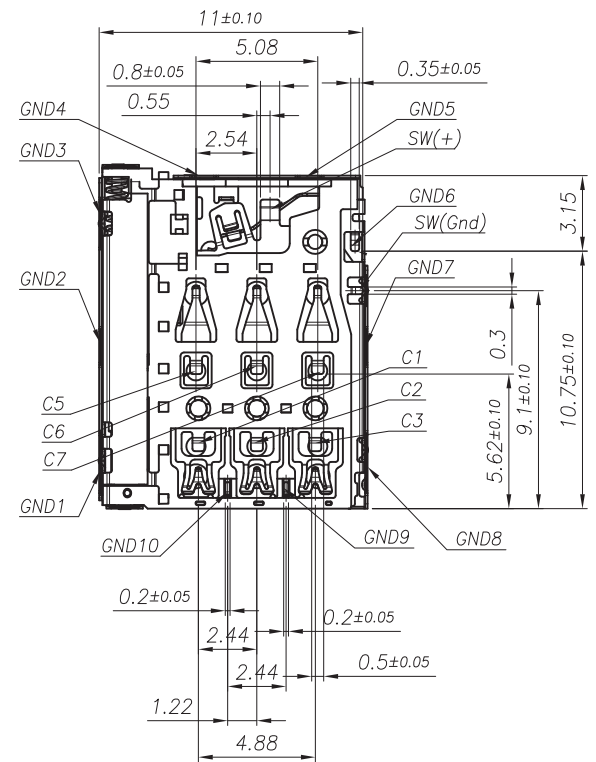
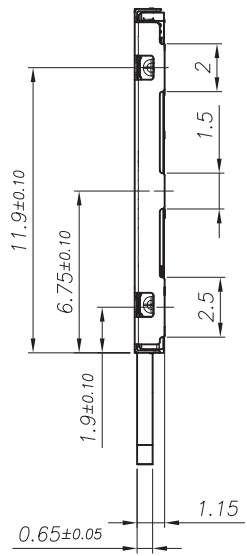
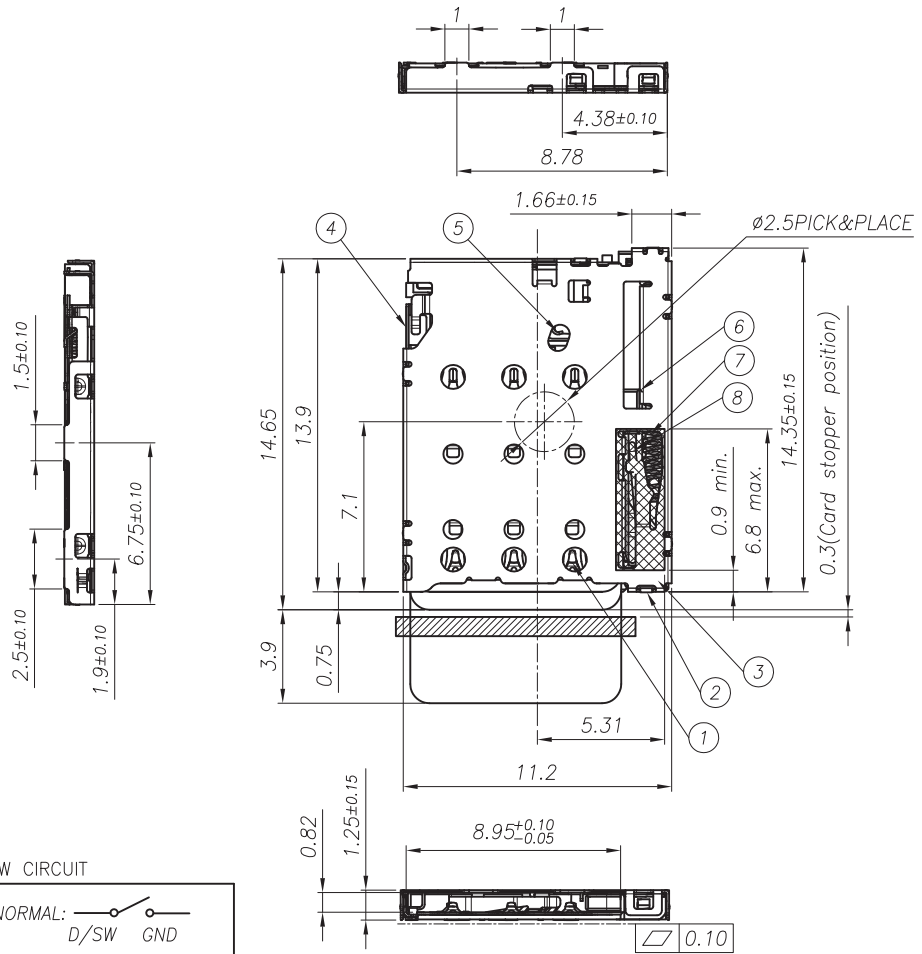
D

A

B

C

D



【 SIM Card Pin Assignments 】

PIN	Name
C1	Vcc
C2	RST
C3	CLK
C4	Reserved
C5	GND
C6	Vpp
C7	I/O
C8	Reserved

- NOTES:
- MATERIAL:SEE TABLE
 - SPECIALITY:
 - Rated current: 0.5A Max
 - Rated voltage: 30V AC
 - Contact Resistance:100mohm MAX
 - Insulation Resistance:1000Mohm MIN 500V DC
 - Dielectric withstanding voltage: 500V AC/minute.
 - Solder ability:250±5°C 10±0.5s.
 - Durability:5000 Cycles
 - Mating and Unmating force
Insertion Force 10N Max
Withdrawal Fore 0.5N Min

3. PART No.:

NS 0 PP - 12 00 06- 02 G

Nano SIM CON.
0=WITHOUT POST
PP=PUSH PUSH
12:HEIGHT 1.25mm

G=gold flash
02=Product Order
Pin NO. 6=6Pin
00=NORMAL TYPE.(ON PCB)

NO.	DESCRIPTION	QTY.	MATERIAL	FINISH	REMARKS
8	HOOK	1	STAINLESS STEEL		
7	SPRING	1	STAINLESS STEEL		
6	SLIDE	1	GLASS FILLED PA10T		
5	DETECTION SWITCH	1	COPPER ALLOY	Au OVER Ni (TABLE 2)	
4	GND FRAME	1	COPPER ALLOY	Au OVER Ni (TABLE 2)	
3	SHELL	1	STAINLESS STEEL	Au OVER Ni (TABLE 2)	
2	HOUSING	1	GLASS FILLED LCP		
1	CONTACT	6	COPPER ALLOY	Au OVER Ni (TABLE 2)	

UNLESS OTHERWISE SPECIFIED TOLERANCES

Wellco T&C Co., Ltd.

DECIMALS: X :±0.5 X.X :±0.20 X.XX :±0.10

ANGLES: X :±2° X.X :±1°

TITLE: 6Pin 1.25H PUSH PUSH Nano SIM CARD CONN.

DWN ALLEN PART NO. NSOPP-120006-02G

CHKD KEVIN SCALE:1:1 UNIT: mm

APVD ERIC.W SIZE: A3 SHEET:1OF 1 REV: A2

CUSTOMER COPY

