

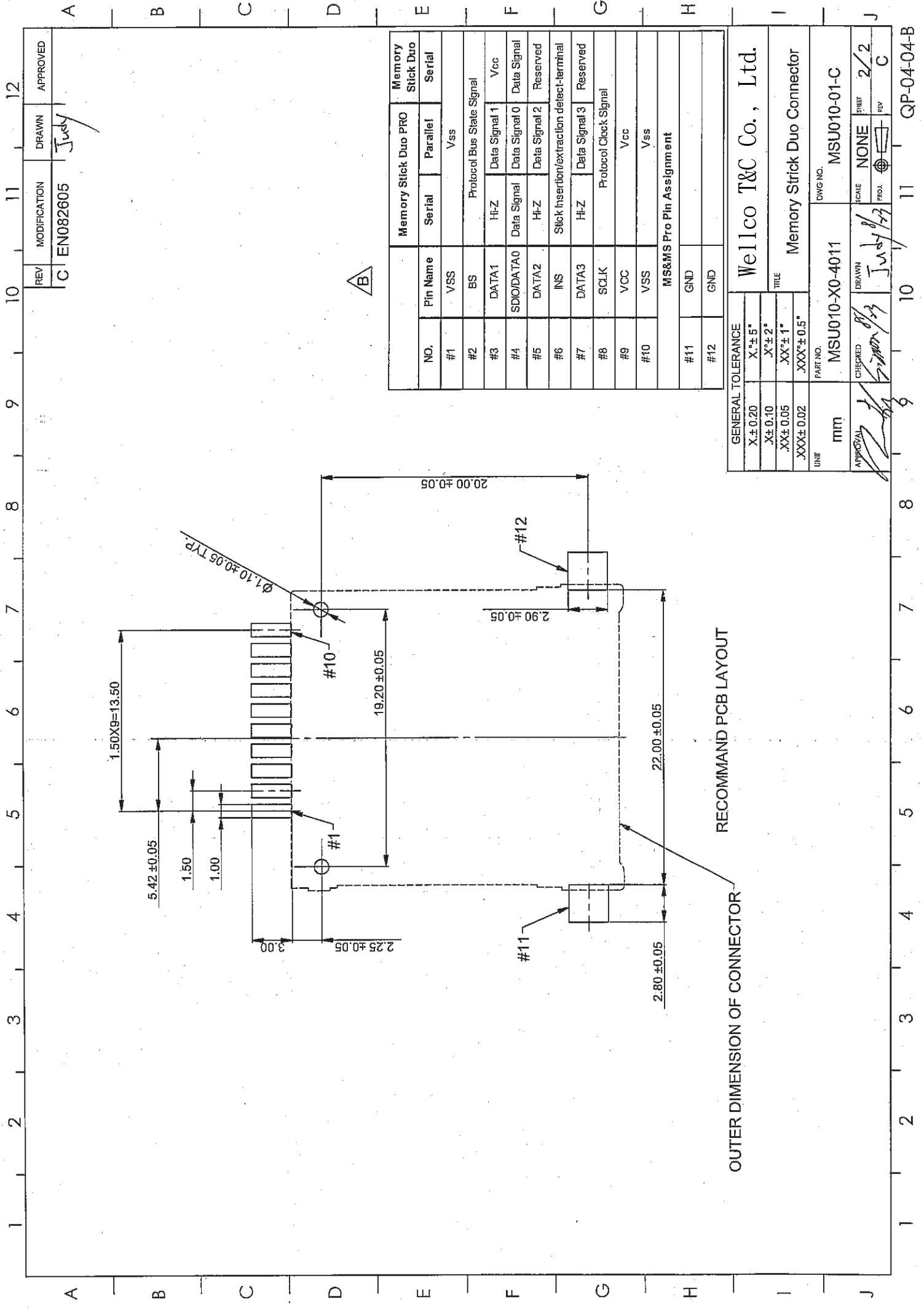
REV.	MODIFICATION	DRAWN	APPROVED
C	EN082605	Judy	

NOTES:  
 1. MATERIAL: HIGH TEMPERATURE THERMOPLASTIC, UL 94V-0  
 COLOR: BLACK  
 CONTACT: COPPER ALLOY  
 COVER: STAINLESS STEEL  
 2. PLATING:  
 CONTACT AREA: GOLD OVER NICKEL  
 SOLDER AREA: TIN/LEAD OVER NICKEL  
 3. COPLANARITY MUST BE WITH IN 0.12mm  
 4.P/N MSU010-X0-4011

COLOR: 0:BLACK  
 PLATING:  
 0: GOLD FLASH  
 2: 10 μGOLD  
 Unlead Plating:  
 A: GOLD FLASH  
 C: 10 μGOLD

GENERAL TOLERANCE		X°±5°	
X±0.40	X°±5°	X°±2°	
X±0.30	X°±2°	.XX°±1°	
.XX±0.20	.XX°±1°	.XXX°±0.5°	
.XXX±0.10	.XXX°±0.5°		
UNIT	mm	PART NO.	MSU010-X0-4011
TITLE		Memory Stick Duo Connector	
DWG NO.		MSU010-01-C	
APPROVAL	CHECKED	DRAWN	SCALE
<i>[Signature]</i>	<i>[Signature]</i>	Judy	5:2
			PROJ.
			REV.
			1
			C

QP-04-04-B



RECOMMEND PCB LAYOUT

OUTER DIMENSION OF CONNECTOR

NO.	Pin Name	Serial	Parallel	Memory Strick Duo PRO	Memory Strick Duo Serial
#1	VSS		Vss		
#2	BS			Protocol Bus State Signal	
#3	DATA1	H-Z	Data Signal 1	Vcc	
#4	SDIO/DATA0	Data Signal	Data Signal 0	Data Signal	
#5	DATA2	H-Z	Data Signal 2	Reserved	
#6	INS	Stick Insertion/extraction detect-terminal			
#7	DATA3	H-Z	Data Signal 3	Reserved	
#8	SCLK		Protocol Clock Signal		
#9	VCC		Vcc		
#10	VSS		Vss		
MS&MS Pro Pin Assignment					
#11	GND				
#12	GND				

GENERAL TOLERANCE	
X ± 0.20	X <sup>o</sup> ± 5°
X ± 0.10	X <sup>o</sup> ± 2°
.XX ± 0.05	.XX <sup>o</sup> ± 1°
.XXX ± 0.02	.XXX <sup>o</sup> ± 0.5°

REV	MODIFICATION	DRAWN	APPROVED
C	EN082605	July	
Wellco T&C Co., Ltd.			
Memory Strick Duo Connector			
PART NO.	DWG NO.		
MSU010-X0-4011	MSU010-01-C		
CHECKED	DRAWN	SCALE	SHEET
July 8/03	July 8/03	NONE	2/2
APPROVAL	PROJ.	REV	C