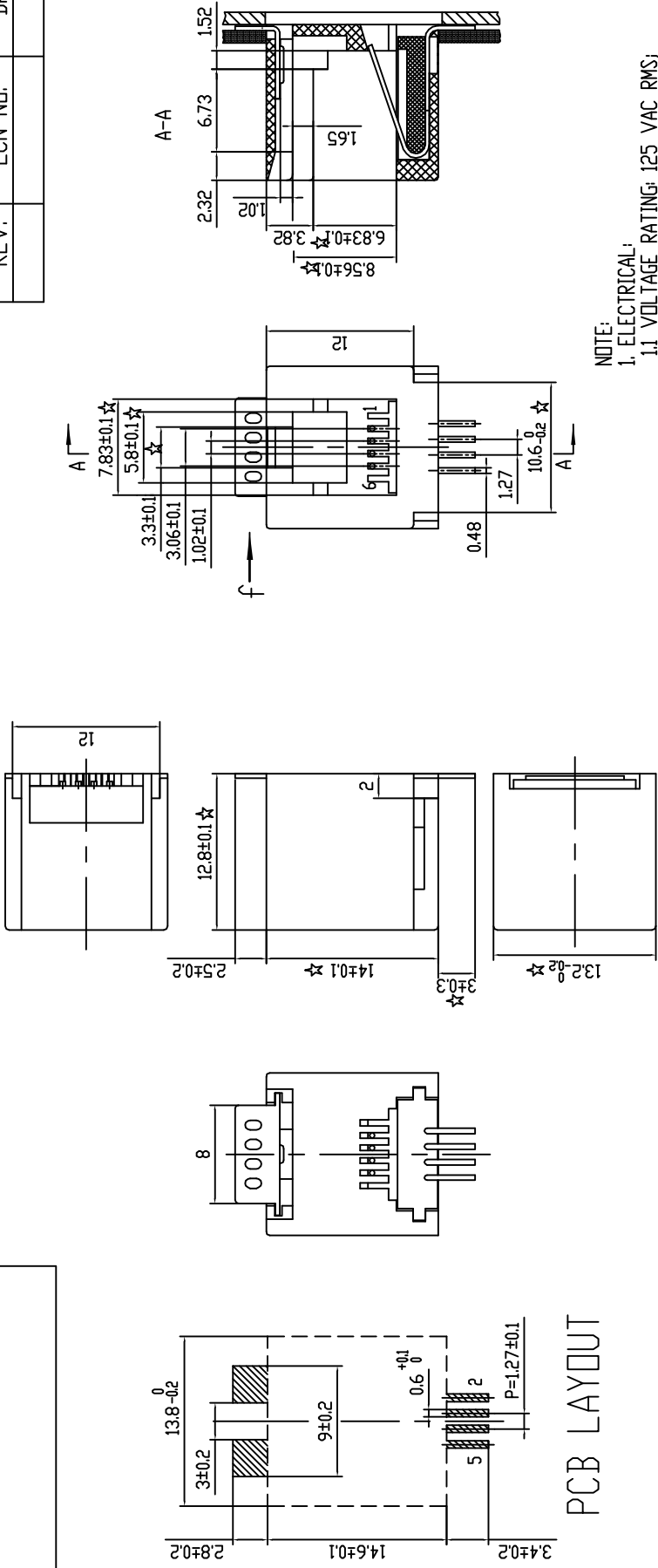


REV.	ECN NO.	DATE



PCB LAYOUT

- NOTE:
- ELECTRICAL:
 - VOLTAGE RATING: 125 VAC RMS;
 - CURRENT RATING: 1.5 AMP;
 - CONTACT RESISTANCE: 20 MILLIOHMS Max;
 - INSULATION RESISTANCE: 1000 MEGOHMS
Min @500 VDC;
 - DIELECTRIC STRENGTH: 1000 VAC RMS 50
or 60HZ 1 Minute;
 - MECHANICAL:
 - HOUSING: T250F8, UL94V-0;
 - INSERT: T250F8,UL94V-0;
 - PIN: 0.46x0.36 PHOSPHOR BRONZE
PLATED 3u" Au;
 - TERMINALS: H65Y;
 - DURABILITY: 750 CYCLES Min.
3. Critical dimension.

RoHS Compliant

Wellco T&C Co., Ltd.			
SCALE	UNIT	CUSTOMER:	
A4	mm		
SIZE		MODEL NO.:	
2:1			

TOLERANCES	MATERIAL:	SEE NOTE	Designed:
0~15±0.15, 15~30±0.2, 30~±0.25 ANGLE±1°.	FINISH:	SEE NOTE	Checked:
	SHEET	1 OF 1	Approved:

NAME:	616 SMT
DWG NO.:	C07081408
PART NO.:	B70IN-4406-R002
REV	00